

Performance-Champion

Innovative new development – Not a facelift



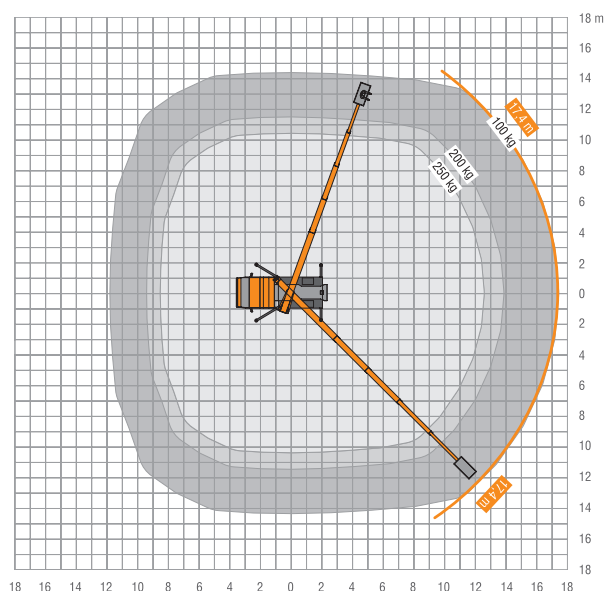
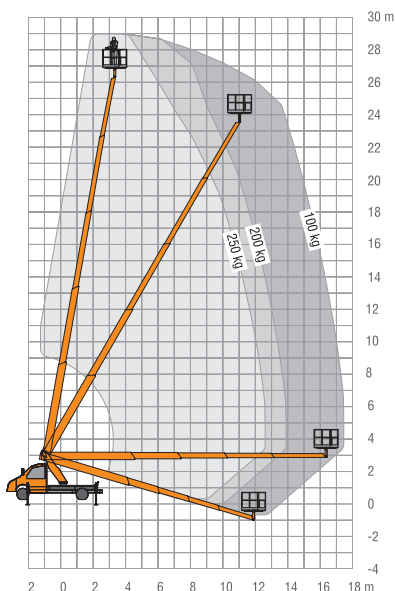
To be driven
from the
class B
driving
licence!

- 29 m max. working height
- Outreach max. 17.4 m
- Lateral outreach max. 14.3 m
- 250 kg basket load

- + 3 movements simultaneously possible (lift, rotate, telescope) + basket rotation
- + Improved work speeds
- + Premium technology in highest stability with easy handling
- + High-strength fine-grained steel for maximum stability
- + Improved basket unit with new design
- + Common parts to other STEIGER® models for even more operating and maintenance efficiency

- + Reduced stock of spare-parts through modular design
- + New more torsion-resistant substructure construction
- + Boom system with laser-welded seam (less distortion, more precise and more stable)

More powerful
and stable than
ever!








STEIGER® TB 290 pro

Enhancing the tried-and-tested

The TB 290 has been the top model in the TB series for almost 2.5 years. We are now replacing this popular series with the **Hi-light Performance** series. The STEIGER® TB 290 pro – with its elaborate design and engineering innovations, designed and developed using **RUTHMANN's** latest steel fabrication techniques and calculation methods – offers customers TOP performance capabilities and maximum stability.

-  Convinces by exceptional performance at maximum stability
-  Short overall length and low construction height for high manoeuvrability
-  **Mounted on the new Mercedes Benz Sprinter. Easy handling.**

Greater height and reach capacity










The working height has increased by half a meter while the reach capacity has been enhanced by a full 1.2 meters backwards and 1.3 meters sideways. Featuring a bona-fide working height of 29 meters, the popular 3.5-ton model is ideal for a wide variety of tasks including gardening / landscaping, building-façade cleaning, and construction / installation assignments. The TB 290 pro remains the perfect choice in the 30-m category.



VERSATILITY FOR EVERYONE

The new STEIGER® generation is attractive for diverse groups. It is a real novelty on the market promising you as customer maximum utilization rate and comfort for each field of application. All models can be driven with a class B driving license.



	29 m		5°		3,0 m
	17,4 m		1,40 x 0,70 m		7,9 m
	2 x 225°		250 kg	 xxx,xxx t	3.500 kg

RUTHMANN GmbH & Co. KG
Ruthmannstraße 4
48712 Gescher
GERMANY

Phone: +49 2863 204-0
Fax: +49 2863 204-212

Internet: www.ruthmann.de
E-Mail: info@ruthmann.de